

FOR SUBLEASE

19350 SW 89th ■ Tualatin



Approximately 4,600 SF Fenced Yard

- Approximately 4,260 SF Available
- Approximately 1,260 SF Office
- Heated Warehouse
- Grade Level Door
- Well Lit and Refinished
- Sublease Term thru June 2009
- \$3,300/month Gross



Integrated Corporate Property Services
CORFAC INTERNATIONAL

"LOCALLY OWNED, GLOBALLY CONNECTED"

For additional information, please contact:

Scott Miller
smiller@icps.biz
503.345.0320

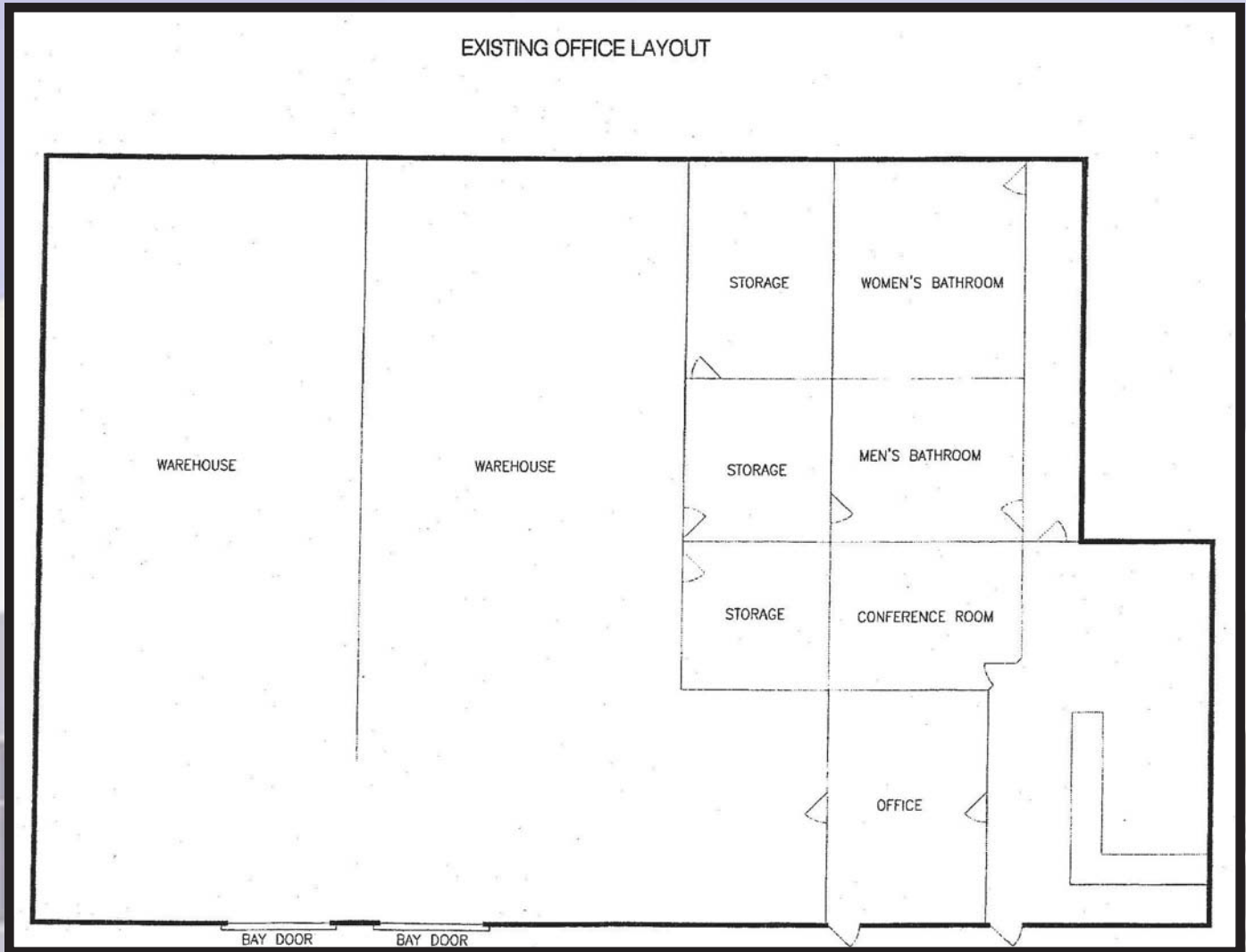
1201 SW 12th Ave., Suite 224 • Portland, OR 97205 • 503.557.7200 • 503.722.8103 fax • www.icps.biz

The information contained herein has been provided by either the property owner or secondary sources we deem reliable. Although Integrated Corporate Property Services has no reason to doubt its accuracy, we have not independently confirmed the information and do not guarantee it. All information (including square footage) should be verified and each property should be analyzed prior to purchase or lease based on individual needs.

FOR SUBLEASE

19350 SW 89th ■ Tualatin

EXISTING OFFICE LAYOUT



Integrated Corporate Property Services
CORFAC INTERNATIONAL

"LOCALLY OWNED, GLOBALLY CONNECTED"

For additional information, please contact:

Scott Miller
smiller@icps.biz
503.345.0320